



INTERCHANGE 3-2-1 DESK

Shown in Tan Echo top with Apple, Persian Blue and Fuchsia edge and Platinum frame. Shown with optional Intuit Chair, Model 00562.

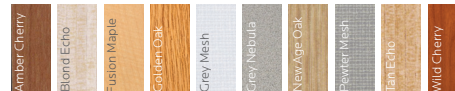
OVERVIEW

This versatile, contemporary table designed for collaborative learning provides sleek looks and solid functionality. The two-student desks can be arranged in many ways for both individual and group learning. Its work surface provides ample space for work of all kinds. Order it in any of 10 standard laminate colors, 20 edge colors and Black or Platinum frame.

- Durable desktop available in 1 1/4" or 3/4" thickness, with a high-pressure laminate surface.
- Edge moldings resist wear, choices available.
- Rugged powder coat surface on legs resists wear.
- Chrome-plated lower legs of 16-gauge steel resist scuffing.
- Sock-style glide caps add protection.
- 1" adjustable leveling glides provide stability on uneven floors.

COLOR OPTIONS

INTERCHANGE LAMINATE COLOR CHOICE



INTERCHANGE EDGE COLOR CHOICE

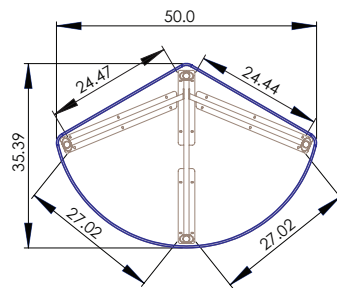


INTERCHANGE LEG COLOR CHOICE

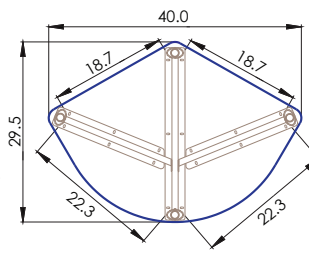




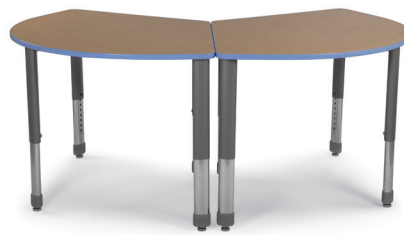
Interchange 3-2-1 desk, Model 03002.
Shown in Grey Mesh laminate top with Mint edge and Platinum frame.



Model 03011
'LS' Bottom View



Model 03002
Bottom View



Model	Description	D"	W"	H"	F.C.	Cube	Wt.	UPS
03002*	3-2-1 Table	29.5	40	22-34	70	1.9	55	*
03011	3-2-1 - LS Table	35	50	22-34	70	2.4	67	



FOR MORE INFORMATION CALL 1-800-328-1061
OR VISIT WWW.SMITHSYSTEM.COM

