



PLATO TABLET ARM CHAIRS

OVERVIEW

The Plato stack chair provides roominess for today's growing students through its oversized seat pan. Built to what's called Euro-Spec (short for European Specifications) the seatback offers some flex front-to-back and provides pronounced lumbar support, encouraging good posture and breathing. Its fresh, yet familiar shape connotes comfort to the student. 14", 16" and 18" sizes.

- The shell rests on the frame, not rivets, to add comfort.
- High-density polypropylene with color throughout the shell.
- Durable swivel-base glides with non-staining nylon bases and chrome-plated steel covers come standard
- Choose optional steel or felt glides.
- The legs are strong, 18-gauge welded steel with a durable chrome finish.

COLOR OPTIONS

PLATO CHAIR SHELL & DESK EDGE COLOR

APPLE	CLEMENTINE	PERSIAN BLUE	BLUEBERRY	FUCHSIA	RED
BLACK	FOREST GREEN	PURPLE	BURGUNDY	MINT	WHITE
CERULEAN BLUE	MOCHA	YELLOW	CHOCOLATE	NAVY	CHARCOAL

STANDARD LAMINATE DESK TOP COLOR

AMBER CHERRY	GREY NEBULA	GOLDEN OAK	TAN ECHO	FUSION MAPLE
BLOND ECHO	NEW AGE OAK	GREY MESH	WILD CHERRY	PEWTER MESH

ADDITIONAL EDGE COLORS

CHAMPAGNE	PLATINUM
-----------	----------

FRAME

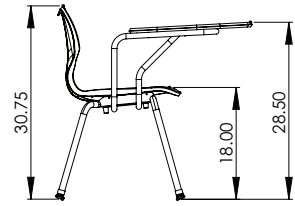
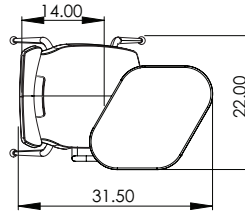
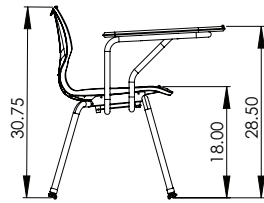
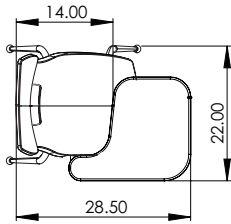
CHROME



MODEL 00975V - 00976V
**PLATO P-TABLET
 ARM CHAIR**
 (RIGHT HAND - LEFT HAND)



MODEL 00977V - 00978V
**PLATO RHOMBUS ARM
 CHAIR**
 (RIGHT HAND - LEFT HAND)



Plato P-Tablet Arm Chair & Plato Rhombus

Model	Description		D"	W"	H"	F.C.	Cube	Wt.	UPS
00975V	Plato P-Tablet	Right-hand - A shell	21	19	18	125	15	15	*
00976V	Plato P-Tablet	Left-hand - A shell	21	19	18	125	15	15	*
00977V	Plato Rhombus	Right-hand - A shell	21	19	18	125	17	17	*
00978V	Plato Rhombus	Left-hand - A shell	21	19	18	125	17	17	*
S	Steel glide option for P-Tablet & Rhombus chairs					Set of 4 installed			
F	Felt glide option for P-Tablet & Rhombus chairs					Set of 4 installed			

Glide Options

Nylon base is standard. Optional are steel base and felt base:

*This is factory installed option not available for field installation. Glide option must be on original chair order.

Steel glide option: Add 'S' to follow Model No.

Felt glide option: Add 'F' to follow Model No.



FOR MORE INFORMATION CALL 1-800-328-1061
 OR VISIT WWW.SMITHSYSTEM.COM

