

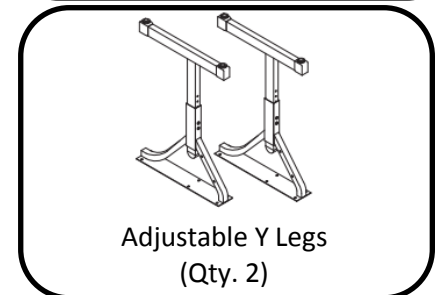
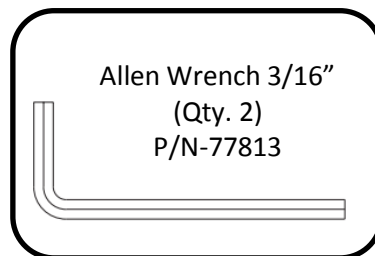
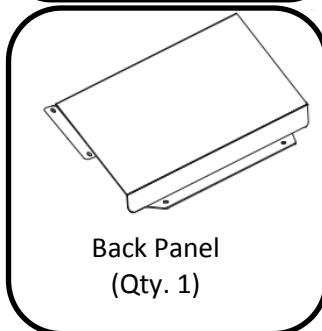
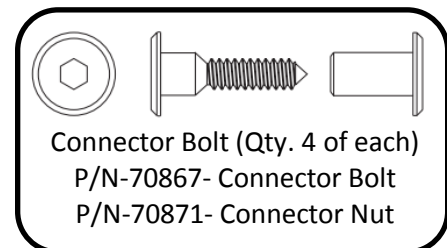
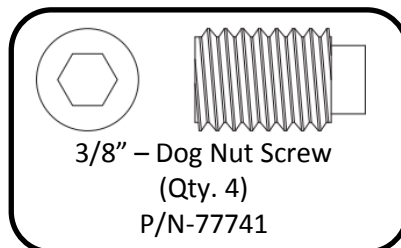
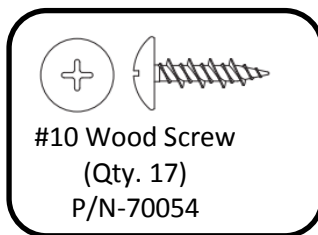


SMITH SYSTEM

Furniture for inspired learning.

Arc Desk Quick Installation Guide

(Model#: 01350, 01351, 01352, 01353)



Replacement pack 69729 includes:

- (4) 70867- Connector Bolt ¼-20X23mm
- (4) 70871- Connector Nut ¼-20X17mm
- (2) 77813- Allen Wrench 3/16"
- (17) 70054- SM Screw #10X3/4

If you have damaged or missing component, please contact customer service
800-328-1061

Arc Desk Assembly Instructions

Step 1: Loosely attach the legs and the modesty panel with (4) Connector Bolts (finger tight) (See Drawing 1A).

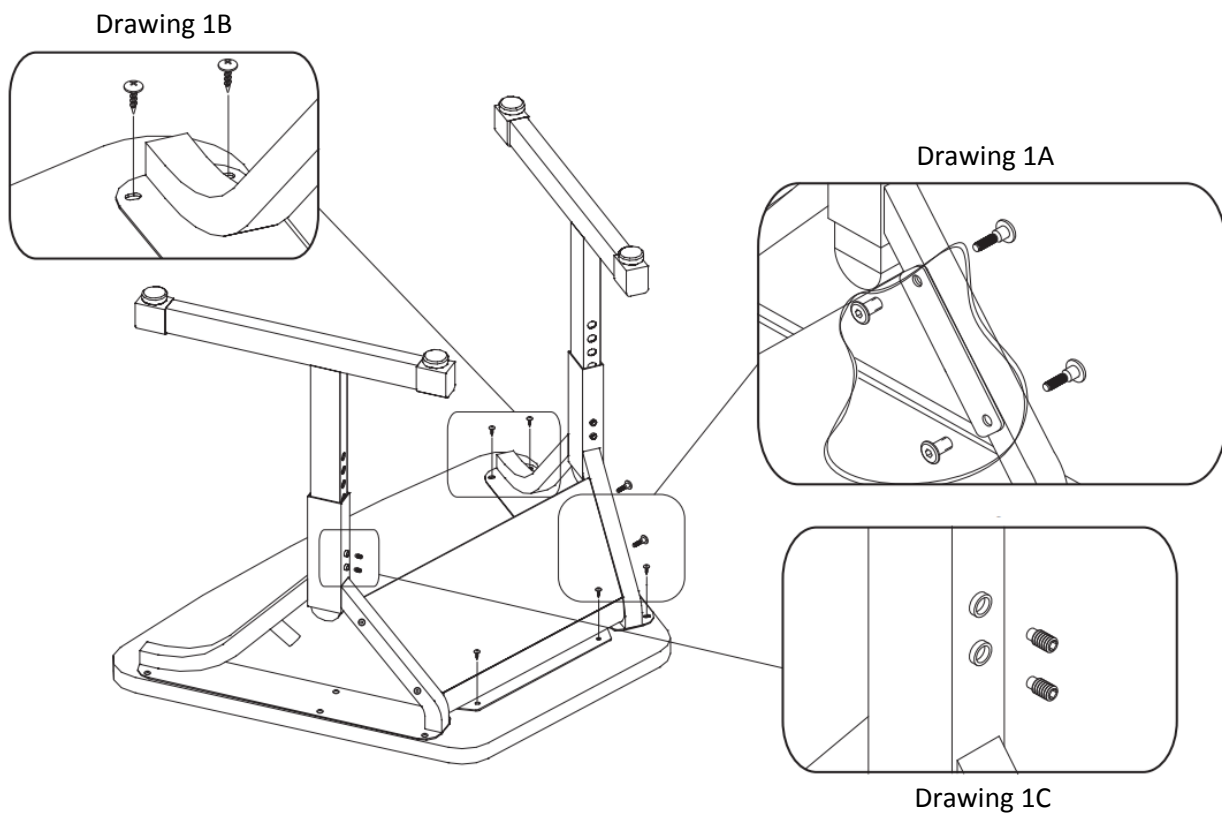
Step 2: Flip the table over on a smooth, clean surface with the bottom facing up.

Step 3: Align the frame assembly with the pilot holes and use (14) Wood Screws to loosely attach to the top (See Drawing 1B)

Step 4: Go back and tighten the frame assembly.

Step 5: Tighten the screw to secure the legs to the table top.

Step 6: Once the legs are securely attached, adjust the legs to the desired height using the Allen Wrench provided (See Drawing 1C).



If you have damaged or missing component, please contact customer service
800-328-1061