



PLATO SEATING

OVERVIEW

The Plato Stack Chair provides roominess for today's growing students through its oversized seat pan. Built to what's called Euro-Spec (short for European Specifications) the seatback offers some flex front-to-back and provides pronounced lumbar support, encouraging good posture and breathing. Its fresh, yet familiar shape connotes comfort to the student. 14", 16" and 18" sizes. P-Tablet & Rhombus top available in 11 laminate choices.

- The shell rests on the frame, not rivets, to add comfort.
- High-density polypropylene shell with color throughout.
- The legs are strong, 18-gauge welded steel with a durable chrome finish.

COLOR OPTIONS

FRAME CHOICES

● CHROME

EDGE CHOICES

● APPLE

● BLACK

● BLUEBERRY

● BURGUNDY

● CERULEAN

● CHARCOAL

● CHOCOLATE

● CLEMENTINE

● FOREST GREEN

● FUCHSIA

● MINT

● MOCHA

● NAVY

● PERSIAN BLUE

● PURPLE

● RED

● WHITE

● YELLOW

LAMINATE CHOICES

● AMBER CHERRY

● ASIAN NIGHT

● BLOND ECHO

● FUSION MAPLE

● GOLDEN OAK

● GREY MESH

● GREY NEBULA

● NEW AGE OAK

● PEWTER MESH

● TAN ECHO

● WILD CHERRY

PLATO STACK CHAIR



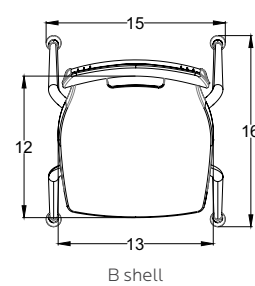
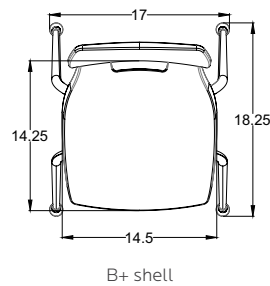
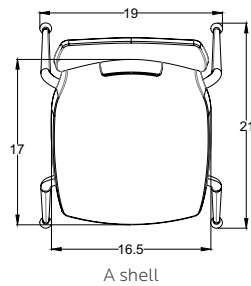
MODEL	DESCRIPTION		D"	W"	H"	F.C.	CUBE	WT.	UPS
00950	Plato Stack Chair	A shell - 18"h	21	19	18	125	4.0	11	*
00951	Plato Stack Chair	B+ shell - 16"h	18.25	17	16	125	4.0	9	*
00952	Plato Stack Chair	B shell - 14"h	16	15	14	125	4.0	8	*
F	Felt glide optional	Set of 4 installed							
S	Steel glide optional	Set of 4 installed							

Glide Options:

Nylon base glides are standard.
Steel and Felt base glides are optional
and are quoted.

**This is factory installed option not available
for field installation. Glide option must be on
original chair order.*

Steel glide option: Add 'S' to follow Model No.
Felt glide option: Add 'F' to follow Model No.



PLATO MOBILE STACK CHAIR



MODEL	DESCRIPTION		D"	W"	H"	F.C.	CUBE	WT.	UPS
00953	Plato Mobile Stack Chair		22	20	18	125		12	*

PLATO FIXED-HEIGHT STOOL



Plato 24\"/>



Plato 28\"/>

MODEL	DESCRIPTION		D"	W"	H"	F.C.	CUBE	WT.	UPS
00980	Plato Fixed-height Stool	A shell - 28"h	21	19	28	125		18	*
00981	Plato Fixed-height Stool	A shell - 24"h	21	19	24	125		16	*
S	Steel glide optional	Set of 4 installed							
F	Felt glide optional	Set of 4 installed							

Glide Options:

Nylon base glides are standard.

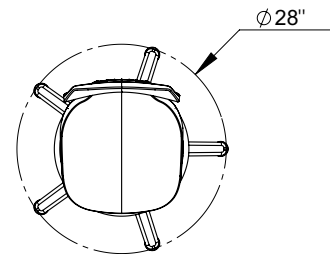
Steel and Felt base glides are optional and are quoted.

**This is factory installed option not available for field installation. Glide option must be on original chair order.*

Steel glide option: Add 'S' to follow Model No.

Felt glide option: Add 'F' to follow Model No.

PLATO ADJUSTABLE CHAIR & STOOL

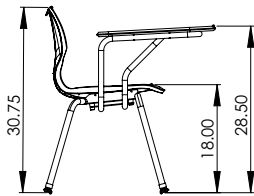
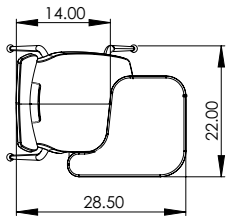


MODEL	DESCRIPTION		D"	W"	H"	F.C.	CUBE	WT.	UPS
00960	Plato Adjustable Chair	w/ glides	28	28	16-21	85	2.1	26	*
00961	Plato Adjustable Chair	w/ casters	28	28	16-21	85	2.1	26	*
00965	Plato Adjustable Stool	w/ glides	28	28	22-32	85	2.4	34	*
00966	Plato Adjustable Stool	w/ casters	28	28	22-32	85	2.4	34	*

PLATO P-TABLET ARM CHAIR & RHOMBUS ARM CHAIRS

**Plato P-Tablet Arm Chair**

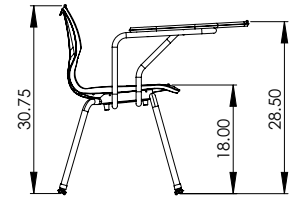
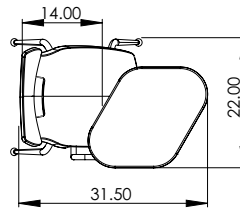
Model 00975V. Shown in Grey Mesh top with Apple edge and Apple Shell.



Plato P-Tablet Arm Chair

**Plato Rhombus Arm Chair**

Model 00977V. Shown in Grey Mesh top with White edge and Cerulean Blue Shell.



Plato Rhombus Arm Chair

MODEL	DESCRIPTION		D"	W"	H"	F.C.	CUBE	WT.	UPS
00975V	Plato P-Tablet	Right-hand - A shell	21	19	18	125	15		*
00976V	Plato P-Tablet	Left-hand - A shell	21	19	18	125	15		*
00977V	Plato Rhombus	Right-hand - A shell	21	19	18	125	17		*
00978V	Plato Rhombus	Left-hand - A shell	21	19	18	125	17		*
S	Steel glide optional	Set of 4 installed							
F	Felt glide optional	Set of 4 installed							

Glide Options

Nylon base glides are standard. Steel and Felt base glides are optional and are quoted.

*This is factory installed option not available for field installation. Glide option must be on original chair order.

Steel glide option: Add 'S' to follow Model No.

Felt glide option: Add 'F' to follow Model No.

Plato Tablet Arm Chairs Have Top and Edge Choices

3/4" Tops

CHOICE 1 4mm T-Mold

CHOICE 2 Bullet T-Mold

CHOICE 1 - 3/4" top with 4mm T-Mold
C to follow Model No.

CHOICE 2 - 3/4" top with Bullet T-Mold
V to follow Model No.



FOR MORE INFORMATION CALL 1-800-328-1061
OR VISIT WWW.SMITHSYSTEM.COM

