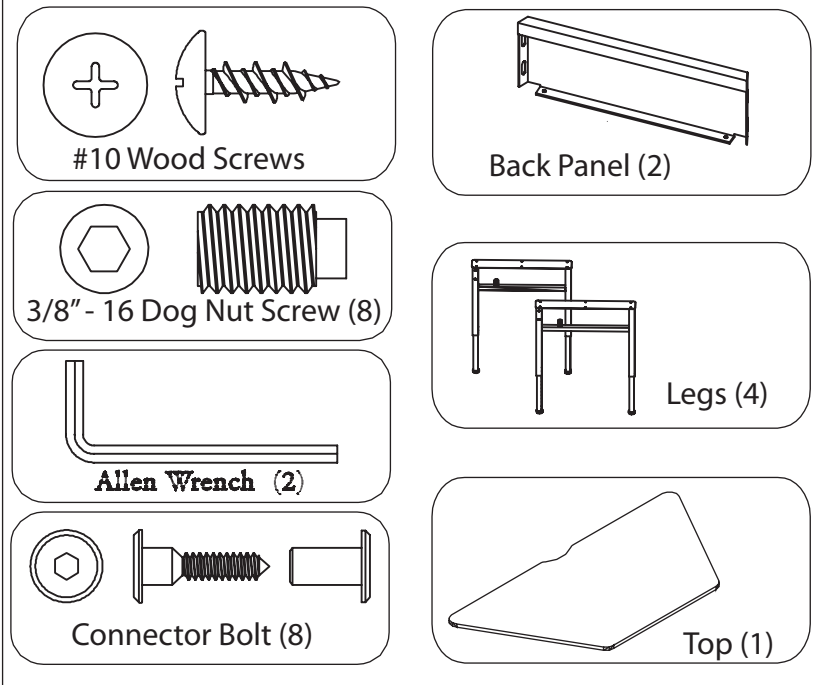




PLANNER WORK CENTERS QUICK INSTALLATION GUIDE

Required for Installation



STEP 1 Place table top on a smooth, clean surface with the bottom facing up.

STEP 2 Align the legs to the pilot holes on the table and use the #10 wood screws to loosely attach the legs to the top

STEP 3 Attach the back panels to the legs using the (8) connector bolts and allen wrench provided.

STEP 4 Now go back to STEP 2 and tighten the screws to secure the legs to the table top. Use #10 wood screws to secure the back panel to the top. **DO NOT OVER TORQUE.**

STEP 5 Once the legs are securely attached, adjust the legs to the desired height using the allen wrench provided.

STEP 6 Secure wire manager tray to table top

Models
24580
24590

