



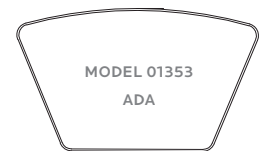
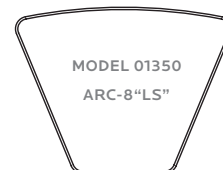
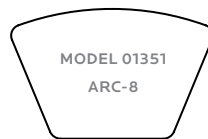
MODEL 01351
ARC-8 FLEX DESK
BLOND ECHO / APPLE / PLATINUM



Patented backpack peg keeps student items organized, can be positioned inside or outside of either leg.

ARC DESKS

Arc-8, Arc-8LS, ADA Arc Desk.

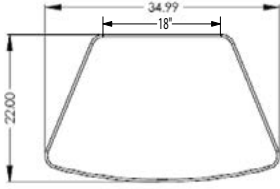


OVERVIEW

Arrange them in compact circles for group work, in pairs or even individually.

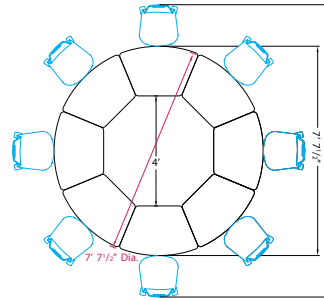
Chosen for collaborative learning classrooms, the stable Arc-8 Desk offers ample workspace and exceptional ingress and egress to the student – crucial in an active classroom. This design saves time whenever she/he stands up or sits down. Choose from 11 standard laminate colors, 21 standard edge colors and Black or Platinum frame colors.

- “Y” Leg shape allows easy ingress and egress for students.
- Desk height adjusts from 24"-32" in 1" increments. Only two legs to adjust.
- Durable desktop available in 1 1/4" or 3/4" thickness, all with a high-pressure laminate surface.
- Edge moldings resist wear, choices available (see chart).
- Rugged powder coat surface on legs resists wear.

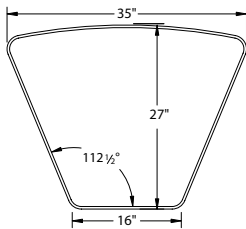


Arc-8 Flex Desk

MODEL	DESCRIPTION	D"	W"	H"	WT.	UPS
01351	Arc-8 Flex Desk	Single-Student	22	35	24-32	45 *

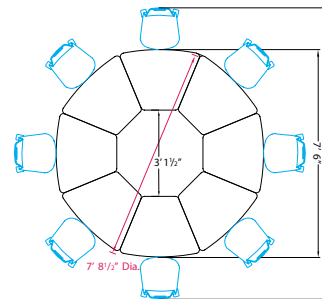


Arc-8 Flex Desk
Eight desks form
7 ft. 7 1/2 in.
diameter circle.

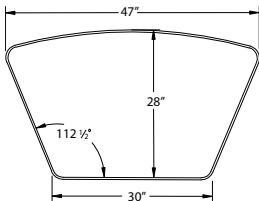


Arc-8LS Flex Desk

MODEL	DESCRIPTION	D"	W"	H"	WT.	UPS
01350	Arc-8LS Flex Desk	Single-Student	27	35	24-32	50 *

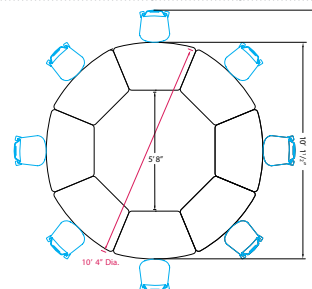


Arc-8 LS Flex Desk
Eight desks form
7 ft. 8 1/2 in.
diameter circle.



ADA* Arc Desk (*Americans with Disabilities)

MODEL	DESCRIPTION	D"	W"	H"	WT.	UPS
01353	ADA* Arc Desk (*Americans with Disabilities)	28	47	24-32	75	



ADA Arc Desk
Eight desks form
10 ft. 4 in.
diameter circle

arc flex desk COLOR SELECTION

ARC DESK LAMINATE COLOR CHOICE

- Amber Cherry
- Blond Echo
- Golden Oak
- Grey Nebula
- Pewter Mesh
- Wild Cherry
- Asian Night
- Fusion Maple
- Grey Mesh
- New Age Oak
- Tan Echo

FRAME COLOR CHOICE

- Black
- Platinum

ARC DESK EDGE COLOR CHOICE

- Apple
- Burgundy
- Charcoal
- Forest Green
- Mocha
- Persian Blue
- Red
- Black
- Cerulean
- Chocolate
- Fuchsia
- Navy
- Platinum
- White
- Blueberry
- Champagne
- Clementine
- Mint
- Orange
- Purple
- Yellow

Arc Tables Have Top and Edge Choices

1 1/4" Tops

CHOICE 1 - 3/8" Bumper T-Mold
no letter to follow Model No.

CHOICE 2 - 4mm T-Mold
D to follow Model No.

3/4" Tops

CHOICE 3 - 4mm T-Mold
C to follow Model No.

CHOICE 4 - Bullet T-Mold
V to follow Model No.

Flexline Desks Optimize the Utility of Cascade™ Storage.

FlexLine Desks help you make the most of the versatile Cascade system of organizing, storing and distributing learning materials. Both FlexLine and Arc™ desks can accommodate totes held in Cascade Storage units, providing easy, seamless transfer of learning materials between desk and cabinet.

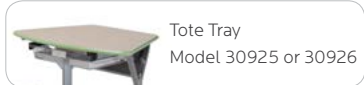


Student Tote Storage and Transfer

Cascade totes containing student work can transfer directly from the storage unit to under-desk-top and back.



MODEL	DESCRIPTION		D"	W"	H"	WT.	UPS
Optional Accessories							
17576	3" Dual-Wheel Caster Pack	Set of 4, 4 Locking	4	4	3	5	*
30925	SW (Standard Width) Tote Tray	with Housing	16.8	13.5	3	10	*
30926	EW (Extra Wide) Tote Tray	with Housing	16.8	19.6	3	8	*
17016	Steel Bookbox for Arc Desk		15	21	3.5	6	*



FOR MORE INFORMATION CALL 1-800-328-1061
OR VISIT WWW.SMITHSYSTEM.COM

