

# cafe meeting tables - criss cross base

model #: 01501-01507 (tops)  
& 01458-01465 (bases)

## cafe meeting tables

### DIMENSIONS + FREIGHT:

#### OVERVIEW:

Our café table bases are an ideal and modern approach to library or cafeteria seating. Café table bases come in multiple shapes and sizes (see chart). From 16" coffee table height to 42" standing height.

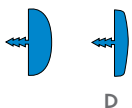
#### MATERIALS:

The 1 1/4" thick work surface consists of a 45 lb. density particle board core with a .030" high-pressure laminated surface and a .020" melamine backer sheet. The edge of the work surface features 3/8" bumper edge molding that is mechanically fastened every 6 to 8 inches to assure a long lasting fit. The top is pre-drilled for ease of installation.

The Café table base is constructed of 18 gauge steel tubes and cast iron, Black or Platinum powder coat finish. The base includes non-marring, adjustable black leveling glides. The column attaches securely to the base with a heavy hex bolt and lockwasher, for a simple, one-step installation.

### CAFE TOP & EDGE PROFILE

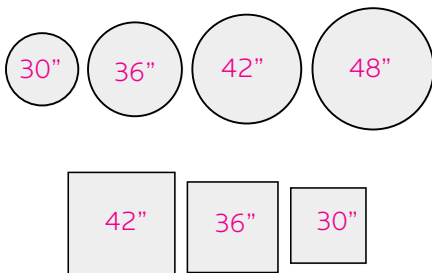
1 1/4" TOP



### CAFE POWER OPTIONS:



### CAFE TOP SIZES:



### FRAME

- BLACK
- PLATINUM

### EDGE CHOICES

- |             |                |                |            |
|-------------|----------------|----------------|------------|
| ● APPLE     | ● CHAMPAGNE    | ● FUCHSIA      | ● PURPLE   |
| ● BLACK     | ● CHARCOAL     | ● MINT         | ● RED      |
| ● BLUEBERRY | ● CHOCOLATE    | ● MOCHA        | ○ WHITE    |
| ● BURGUNDY  | ● CLEMENTINE   | ● NAVY         | ● YELLOW   |
| ● CERULEAN  | ● FOREST GREEN | ● PERSIAN BLUE | ● PLATINUM |

### LAMINATE CHOICES

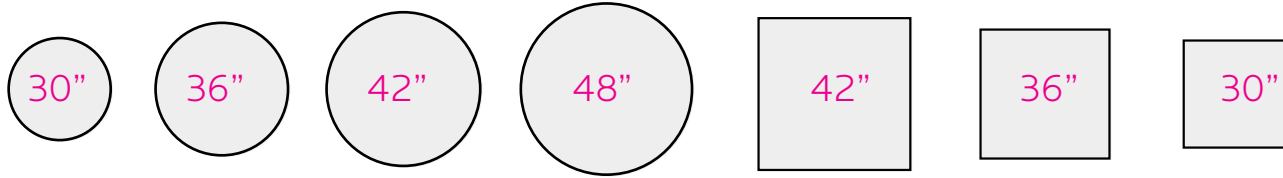
- |                |               |               |
|----------------|---------------|---------------|
| ● AMBER CHERRY | ● GOLDEN OAK  | ● PEWTER MESH |
| ● ASIAN NIGHT  | ● GREY MESH   | ● TAN ECHO    |
| ● BLOND ECHO   | ● GREY NEBULA | ● WILD CHERRY |
| ● FUSION MAPLE | ● NEW AGE OAK |               |

# cafe meeting tables

model #: 01501-01507 (tops)  
& 01458-01465 (bases)

## 1) CAFÉ TOP, CHOOSE TABLE TOP

Cafe base recommended pairing:

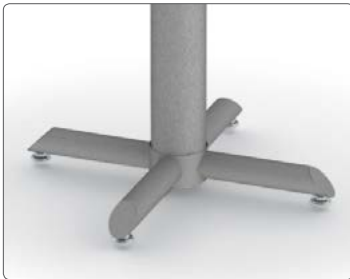


MODEL	DESCRIPTION	D"	W"	H"	F.C.	CUBE	WT.	UPS
<b>Square Café Table Tops</b>								
01501	Square top only	30	30		70	1.5	29	*
01503	Square top only	36	36		70	2.25	42	*
01505	Square top only	42	42		70	3.0	57	*
<b>Round Café Table Tops</b>								
01502	Round top only	30" dia.			70	1.5	25	*
01504	Round top only	36" dia.			70	2.25	33	*
01506	Round top only	42" dia.			70	3.0	45	*
01507	Round top only	48" dia.			70	4.0	58	

Cafe base recommended pairing:

p/n #	size	24" crisscross	30" crisscross
01502	30" round	●	
01504	36" round	●	
01506	42" round		●
01507	48" round		●
01501	30" square	●	
01503	36" square	●	●
01505	42" square		●

## 2) CAFÉ BASE - CHOOSE BASE



MODEL	DESCRIPTION	D"	W"	H"	F.C.	CUBE	WT.	UPS
<b>Crisscross Bases</b>								
01458	24" Crisscross Base	coffee table height	24" dia.	16	70	5.5	16	*
01459	24" Crisscross Base	sitting height	24" dia.	29	70	6.75	17	*
01460	24" Crisscross Base	k-8 standing height	24" dia.	36	70	8.5	20	*
01461	24" Crisscross Base	standing height	24" dia.	42	70	10.0	23	*
01462	30" Crisscross Base	coffee table height	30" dia.	16	70	8.5	20	*
01463	30" Crisscross Base	sitting height	30" dia.	29	70	8.5	21	*
01464	30" Crisscross Base	k-8 standing height	30" dia.	36	70	10.75	24	*
01465	30" Crisscross Base	standing height	30" dia.	42	70	12.25	27	*

## 3) CAFÉ POWER, CHOOSE SURFACE POWER

**ADD POWER**

MODEL	DESCRIPTION	F.C.	CUBE	WT.	UPS
017088	Power Dome	4 Power	70	.25	*
017097	Flat Surface Power Module	2 Power	70	.25	*
017098	Flat Surface Power Module	2 Power / 2 USB	70	.25	*



#017088 - Power Dome (4 power)

#017097 - Flat Surface Power Module (2 power)

#017098 - Flat Surface Power Module (1 Power, 2 USB)