



Smith System®

ASSEMBLY INSTRUCTIONS

UXL Nest and Fold Table



SPECIAL NOTES

1. Check that all components are accounted for and undamaged before assembling.
2. Please assemble the product in a clean dry area.
3. For larger units, you may need another person to help assemble the product.
4. Clean the product with a mild cleaner and a damp cloth.



For assistance in assembling product, missing or damaged parts, or to place an order, please contact customer service at 800-328-1061.

You may also place your order online at

ASSEMBLY INSTRUCTIONS

Step 1: Carefully place the Top with pre-attached Frame upside down on a clean dry surface.



Step 2: Pull the handle towards the front of the table to unlock the mechanisms and flip both mechanisms up.



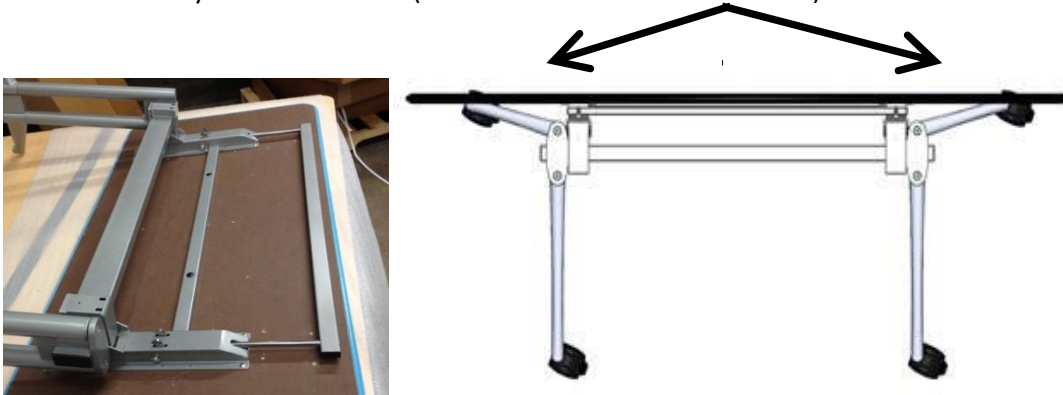
Step 3: Remove the two Flat Head Allen Screws using the 5mm Allen Wrench and remove the Leg Plate from both legs.



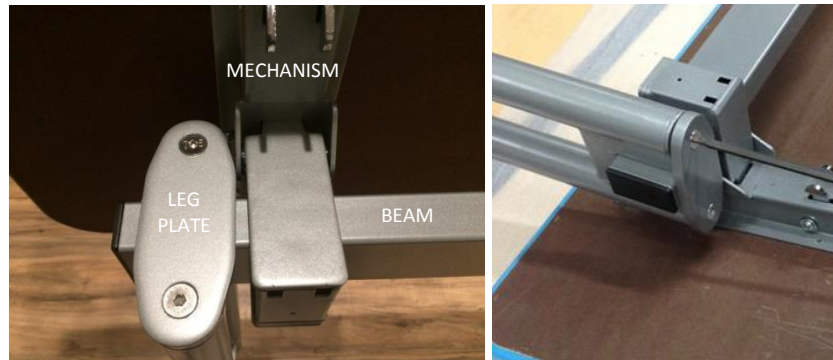
For assistance in assembling product, missing or damaged parts, or to place an order, please contact customer service at 800-328-1061.

You may also place your order online at

Step 4: Slide the leg over the beam ensuring that the longer foot faces towards the handle and the shorter foot faces away from the handle. (FACE LEGS OUTWARD AS SHOWN)



Step 5: Check that the Legs are not interfering with the mechanism and are equally spaced approximately ½" from the end of Beam on both sides.



Step 6: Reinstall both leg Plates and Screws removed in Step 3 and tighten both screws firmly but equally.

Step 7: Install both sets of Casters by screwing into legs using supplied wrench to tighten.



For assistance in assembling product, missing or damaged parts, or to place an order, please contact customer service at 800-328-1061.

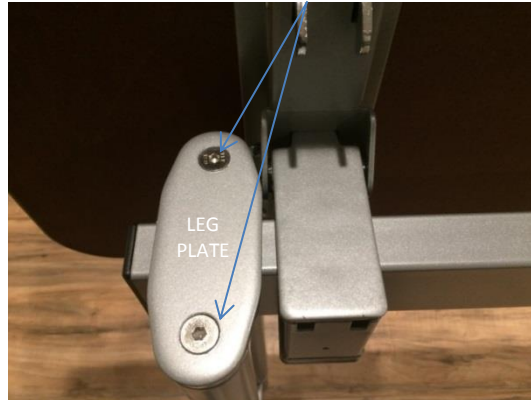
You may also place your order online at

Step 8: Carefully place the Table back down on the floor.

Step 9: Check the level of the Top using a level or measure the distance from each corner of the top to the floor with a tape measure.



Step 10: If necessary, adjust the level of the Top using the two screws on the Leg Plate.



Step 11: To Lower the side closest to You (handle side):

Loosen (turn counter-clockwise) the Screw farthest away from you $\frac{1}{2}$ turn and Tighten (turn clockwise) the Screw closest to you. Do this for both Legs. (1/2 turn will adjust approximately 0.5 degrees).

To Raise the side closest to You (handle side):

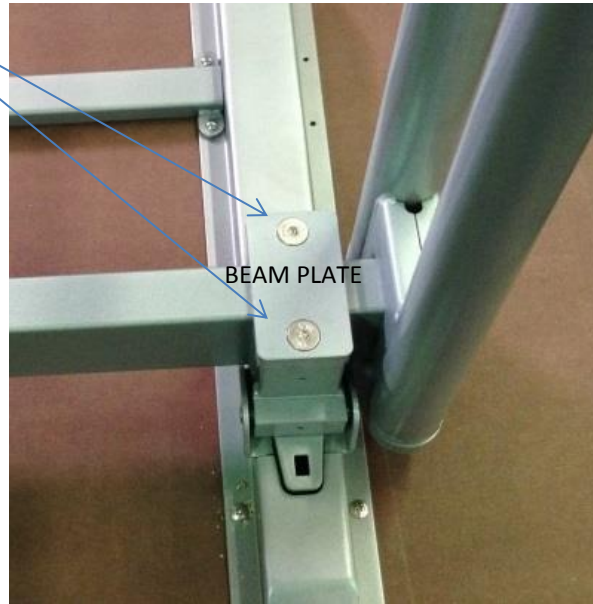
Loosen (turn counter-clockwise) the Screw closest to you $\frac{1}{2}$ turn and Tighten (turn clockwise) the Screw farthest away from you. Do this for both Legs. (1/2 turn will adjust approximately 0.5 degrees).

Step 12: Recheck the level of the Top using the level or tape measure and repeat Step 11 if needed. If level at this point skip to Step 14.

For assistance in assembling product, missing or damaged parts, or to place an order, please contact customer service at 800-328-1061.

You may also place your order online at

Step 13: If the Top is still not level after Step 12, use the Beam Plate Screws shown below to adjust the level of Top an additional amount.



Step 14: If needed, fine adjustment of the level of the Table can be accomplished by using the Knurled Disks just above each Caster. Lift up on the corner of the Table slightly to lessen the weight on the caster and twist or turn the Knurled Disk to raise or lower that corner of the Table. The Knurled Disk is normally set to the lowest position so try raising the corners of the Table that are low first.



For assistance in assembling product, missing or damaged parts, or to place an order, please contact customer service at 800-328-1061.
You may also place your order online at