



OVERVIEW

Table lines flair to provide clear sightlines for multi-person viewing and participation in distance learning or other presentation application. Large 72" long table accommodates two people comfortably along sides and two people at the head. Ideal for conference rooms hosting multimedia applications.

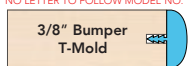
MATERIALS

The work surface consists of a 45 lb density particle board core with a 0.030" high pressure laminated surface and a 0.020" backer sheet. The edge of the work surface features T-mold that is stapled to the underside of the work surface every 6"-8".

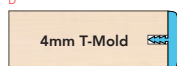
Frame consists of two fully welded segments. Ellipse shaped tubes measure 1.5" x 2.5". 16 gauge leg inserts and leg stems are welded to 14 gauge plates. The pre-drilled top is standard at 1 1/4" thick and available in 3/4" thick option. Laminate and T-mold color and style options are listed below. Top is predrilled to attach to legs using included fasteners. Legs include a 1" adjustable leveling glide with a locking stop to provide stability on uneven floors.

TOP AND EDGE OPTIONS

1 1/4" TOP W/ BUMPER T-MOLD
NO LETTER TO FOLLOW MODEL NO.



1 1/4" TOP W/ 4MM T-MOLD
D



1 1/4" TOP W/ 3MM - 90° CORNERS
H

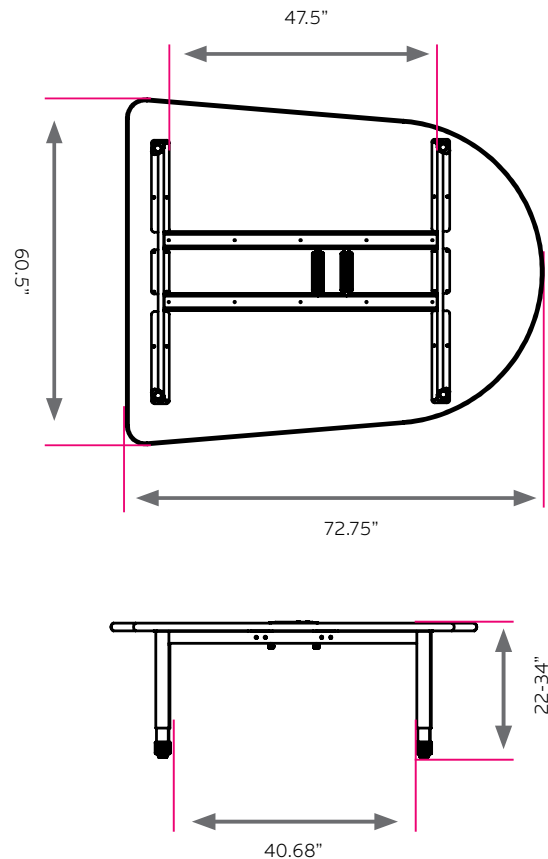


1 1/4" TOP W/ 3MM - ROUND CORNERS
F



DIMENSIONS

Model	Description		D"	W"	H"	WT
04137	Interchange Round End Multimedia Table	No Power	72.75	60.5	22-34	170
04138	Interchange Round End Multimedia Table	4 Power & 8 USB	72.75	60.5	22-34	170
04139	Interchange Round End Multimedia Table	8 Power	72.75	60.5	22-34	170
04140	Interchange Round End Multimedia Table	6 Power & 4 USB	72.75	60.5	22-34	170



LARGE MONITOR TABLE MOUNT



ADD POWER



#017085 / #017092



#017093 / #017086

Model 17354

For 32 - 50 inches monitors.
Accommodates VESA mounting
100mm x 100mm to 400mm x
200mm. 100 lb. weight limit.

STANDARD LAMINATE OPTIONS

Want to specify a different laminate?

No problem. If you have 20 or more tops of the same color -60 or -38 there is no upcharge. Have 20 or less? We can quote for you with the Wilsonart code and - finish style. We can specify other laminates - call to inquire and get a quote.



**Make it mobile
with 3" casters**
Order Model 17576

SUGGESTED LAMINATE OPTIONS



All 15 of the standard laminates are -60 finish, if you need to match a laminate from a previous year, please let us know on your order (example Pewter Mesh 4878-38, our standard is -60).

When the WilsonArt Laminate code includes a "Y", "K", "-12" "-78", "Aeon" etc, these are special laminates with an upcharge, even when it contains -38 or -60.

STANDARD EDGE COLOR OPTIONS



LEG COLOR OPTIONS



EDGE COLOR OPTIONS WITH ADDITIONAL LEAD TIME



INTERCHANGE HIGH RANGE INSERTS



Model 77158

With adjustability from 30 - 42 inches in height. Adjust in 1" increments with a single hex screw per leg.