



elemental 30x72 rectangle

MODEL #: EL3072_ _ _ _ _EG

DIMENSIONS + FREIGHT

| MODEL | DESCRIPTION | LEG TYPE | LEG # | D" | W" | H" | F.C. | CUBE | WT. |
|-------------------------|-----------------|-------------------------|--------|----|----|-------|------|------|-----|
| Rectangle models | | | | | | | | | |
| EL3072_ _ _ _ _EG | Rectangle Table | Fixed Height | 4 Legs | 30 | 72 | 30 | 70 | 2.6 | 98 |
| EL3072_ _ _ _ _EC* | Rectangle Table | Fixed Height for Caster | 4 Legs | 30 | 72 | 27" | 70 | 2.6 | 102 |
| EL3072_ _ _ _ _EA | Rectangle Table | Adjustable Height | 4 Legs | 30 | 72 | 19-33 | 70 | 2.6 | 101 |

* REMINDER: Casters sold separately.

**3" Casters make table height 30."

BUILD PART NUMBER

EL 3 0 7 2
or E8
Choose MODEL

7 8 9 10
Pick Laminate Color
Pick Edge Color

11 12 13
Pick Leg Color

14 15
Pick Leg Style
Fixed-height with Glide (EG) leg set is standard.

OVERVIEW

Elemental tables have optional colored casters and matching colored leg sets. The unique colored legs comes in three configurations; fixed height (EG), adjustable height (EA) and fixed height for use with casters (EC).

MATERIALS

The 1 1/4" thick WORK SURFACE consists of a 45 lb density particle board core with a 0.030" high pressure laminated surface and a 0.020" melamine backer sheet. The edge of the tabletop features your choice of a 3/8" bumper t-mold or 4mm t-mold, which is then fastened to the underside of the work surface every 6 to 8 inches to assure a long lasting fit. Mounted under the work surface is a 14 gauge steel STIFFENER for reinforcement.

LEG STYLE 14 15

1. "EG" - Fixed-Height 30"
2. "EC" - Fixed-Height 27" ** (use w/ 3" casters = 30"H)
3. "EA" - Adjustable Height 19" - 33" (with glides)

The Elemental LEG SETS are constructed of 14-gauge steel with a durable powdercoat paint finish in one of five colors. The legs are reinforced by a gusseted, 'spade' shaped, mounting plate. Each one of the 4 legs attach to the pre-drilled holes in the top with 10 #10 x 5/8" screws per leg. Legs come standard with a nylon base glide.

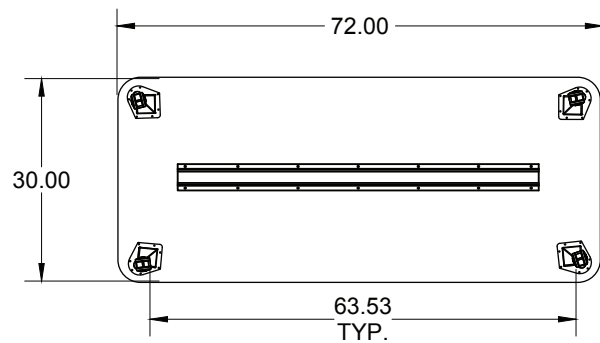
OPTIONAL dual-wheel 3" casters available as a separate line item, 30"x72" Rectangle Table uses 4-pack, Model 17576 for black, 17577 _ _ _ for colors: platinum, orange, cerulean, charcoal or apple.

NEW FOR 2017 ADD COLORED CASTERS

Model 17577 _ _ _ (4-pack)



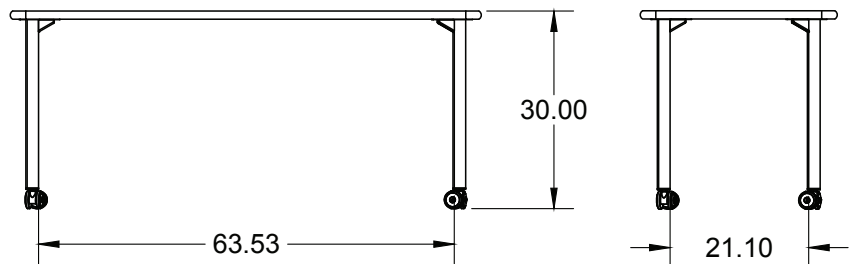
* REMINDER: Casters sold separately! (17577 _ _ _ [4-pack])



**drawings shown with 'EC' style legs, with optional 3" casters added.

**3" Casters make table height 30."

* REMINDER: Casters sold separately! (17577 _ _ _)



LEG STYLE: 14 15



Standard Laminate Options



EL or E8 **3 0 7 2** Choose **MODEL** **7 8 9** Pick Laminate Color **10** Pick Edge Color **11 12 13** Pick Leg Color **14 15** Pick Leg Style
Fixed-height with Glide (EG) leg set is standard.

Want to specify a different laminate?

No problem. If you have 20 or more tops of the same color -60 or -38 there is no upcharge. Have 20 or less? We can quote for you with the Wilsonart code and - finish style. We can specify other laminates - call to inquire and get a quote.



Suggested Standard Laminates: **7 8 9**

| | | | | |
|---|---|---|--|---|
|  ASIAN NIGHT 7949-60 ANG |  BOARDWALK OAK 7983-60 BWK |  PEWTER MESH 4878-60 PEW |  CLASSIC LINEN 4943-60 CLN |  HIGH RISE 4996-60 HRE |
|  BUKA BARK 7982-60 BBK |  PALISADES OAK 7987-60 PSO |  FLAX LINEN 4990-60 FLL |  MISSION MAPLE 7990-60 MIM |  NEW AGE OAK 7938-60 NEW |

Classic Standard Laminates:

| | | |
|--|--|---|
|  WILD CHERRY 7054-60 CHE |  GREY NEBULA 4622-60 GNB |  FUSION MAPLE 7909-60 MAP |
|--|--|---|




All 13 of the standard laminates are -60 finish, if you need to match a laminate from a previous year, please let us know on your order (example Pewter Mesh 4878-38, our standard is -60).

When the WilsonArt Laminate code includes a "Y", "K", "-12" "-78", "Aeon" etc, these are special laminates with an upcharge, even when it contains -38 or -60.

Standard Edge Color Options **10**

| | | | | | |
|--|---|--|--|--|---|
|  APPLE A |  BLACK B |  BLUEBERRY C |  BURGUNDY D |  CERULEAN S |  CHAMPAGNE O |
|  CHARCOAL R |  CHOCOLATE Q |  CLEMENTINE E |  FOREST GREEN F |  FUCHSIA G |  MINT H |
|  MOCHA T |  NAVY I |  ORANGE U |  PERSIAN BLUE J |  PLATINUM P |  PURPLE K |
|  RED L |  YELLOW N | | | | |

Elemental Leg Colors **11 12 13**

| | | | | |
|---|---|---|--|---|
|  PLATINUM PLT |  CHARCOAL CGR |  ORANGE ORG |  APPLE APL |  CERULEAN CER |
|---|---|---|--|---|

Elemental Leg Style **14 15**



**3" Casters make table height 30."
 *REMINER: Casters sold separately!
 (17577 _ _ _)

LEG STYLE:

1. "EG" - Fixed-Height 30"
2. "EC" - Fixed-Height 27"
(use w/ 3" casters = 30"H).
3. "EA" - Adjustable Height
(19" - 33" w/ glides)
(21.5" - 35.5" w/ 3" casters)