



# Flowform™ Learn Lounge

**Smith System®**  
*Built for Learning.*



# Flowform™ Learn Lounge

Flowform™ Learn Lounge addresses a conceptual need for collaboration and comfort, but also for variety and choice when it comes to learning spaces.

Smith System set out to deliver a soft seating solution that accomplished:

- Engaged Learning (not Leaning) Postures
  - The individual pieces work as a system to prevent awkward, even harmful, sitting positions.
- Collaborative Combinations
  - The multi-functional pieces are easy to push into place. Students can flow between “me” and “we” spaces, creating unlimited furniture match-ups.
- Variety and Freedom of Choice
  - Empowers students to customize spaces for academic and social learning. They can choose where and how to sit, with extra visual and acoustical privacy.







# Flowform™ Learn Lounge

Students love lounge furniture, but it can have ergonomic and stay-on-task drawbacks.

Observations:

- Learners are engaged in collaborative learning experiences, and they seek comfortable learning settings  
BUT  
settings do not adequately address both these needs simultaneously.
- Learners are engaged in more collaborative learning experiences  
BUT  
settings for variety + choice to support those experiences are limited.
- Students use individual tech while sitting together in wide variety of postures  
BUT  
few learning experiences bring together individual tech use + comfortable community in supportive, seamless way.









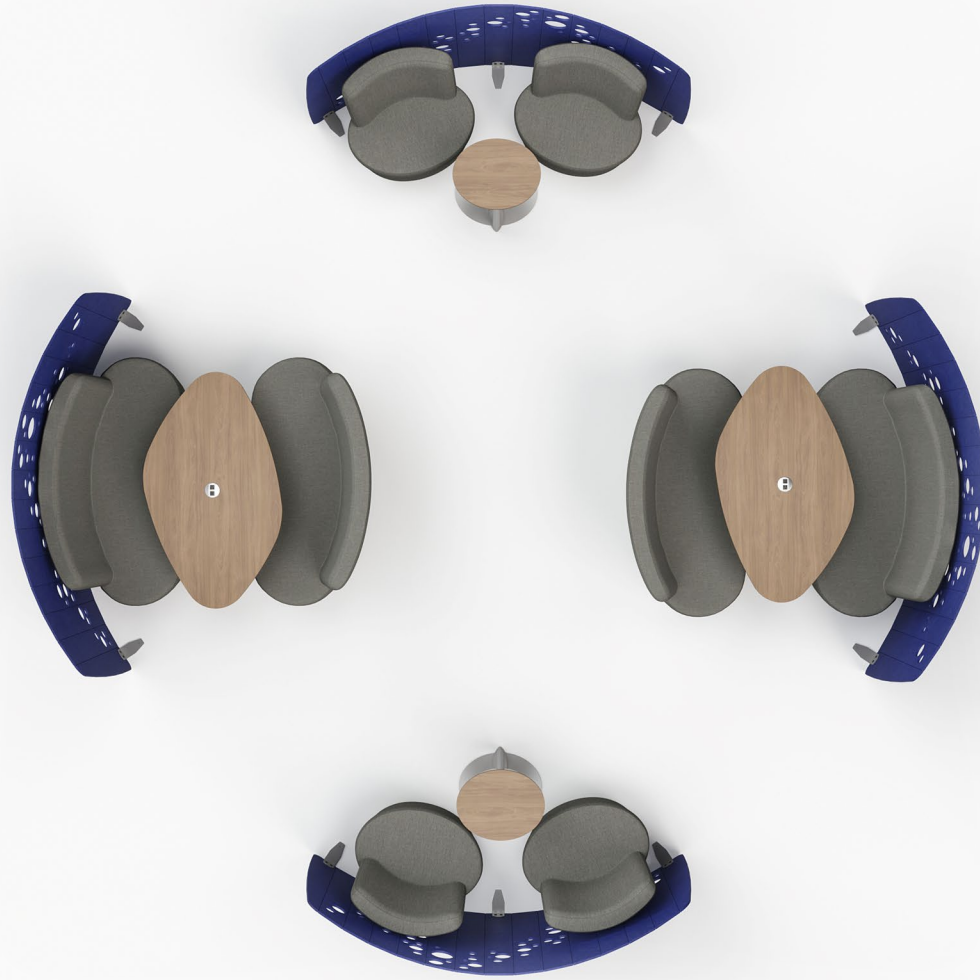
# Flowform™ Learn Lounge

- **Flowform™ Learn Lounge Soft Seating**—Learn Lounge seating literally has students' backs. We designed the upholstered seating with the same ergonomic dimensions – seat depth, and the seat pan's angle to the vertical back – of an ergonomically designed student chair. That means a soft, yet highly supportive, engaged sit for students.
- **Flowform™ Learn Lounge Tables**—Casual learning spots are notorious for lacking appropriate work surfaces. That forces students to hover over their laps or the floor. Learn Lounge eliminates that. The table and ottoman curves work with the seating curves, so students feel connected, but not claustrophobic. The soft shapes welcome students from any direction; a streamlined base maximizes leg room.
- **Flowform™ Learn Lounge Screens**—Giving students some amount of physical and acoustical privacy is key to lounging (and learning) around. Learn Lounge Screens do that but are low enough for teachers to retain sight lines. The highly versatile, flexible space dividers are a perfect blend of practical and decorative, with four subtle pattern choices.



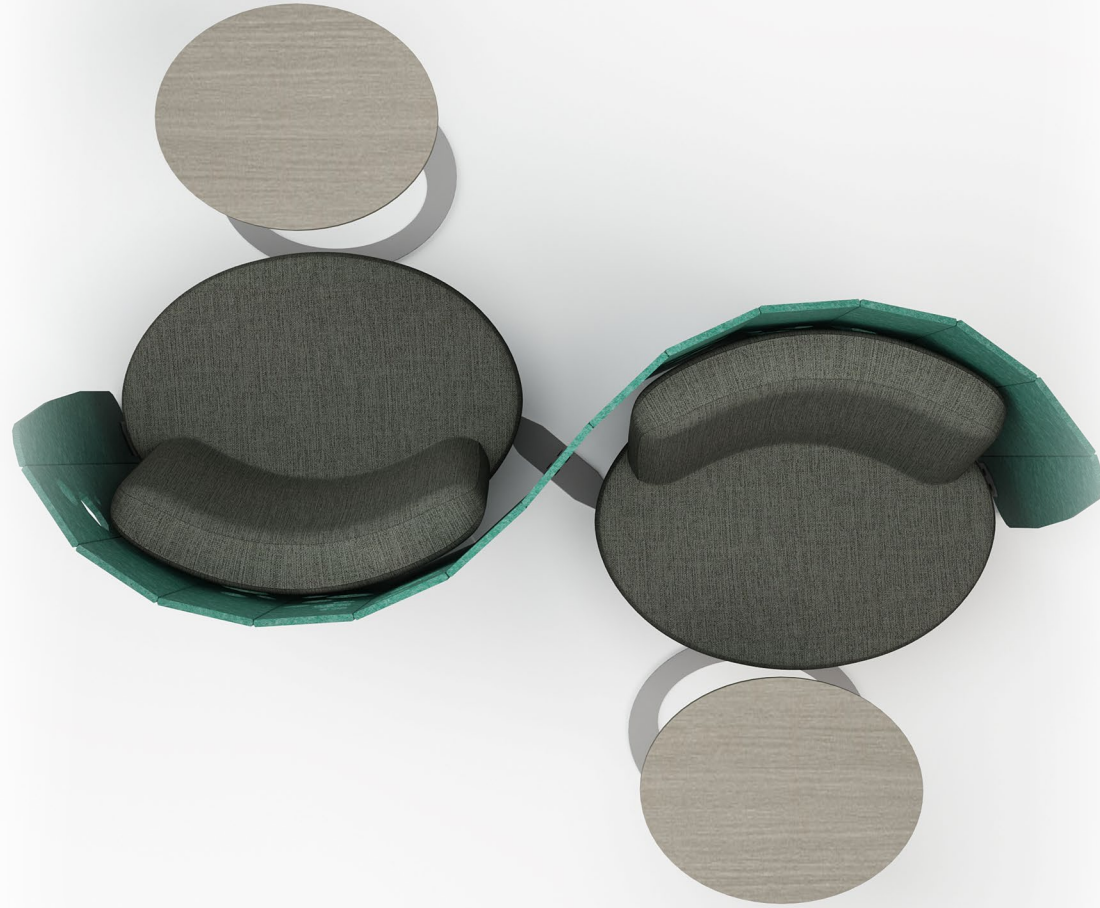
IMAGINE CHALLENGE  
EXPLORE DREAM LEARN CREATE  
COMMITMENT INNOVATE  
FOCUS BELIEVE NETWORK

# Applications



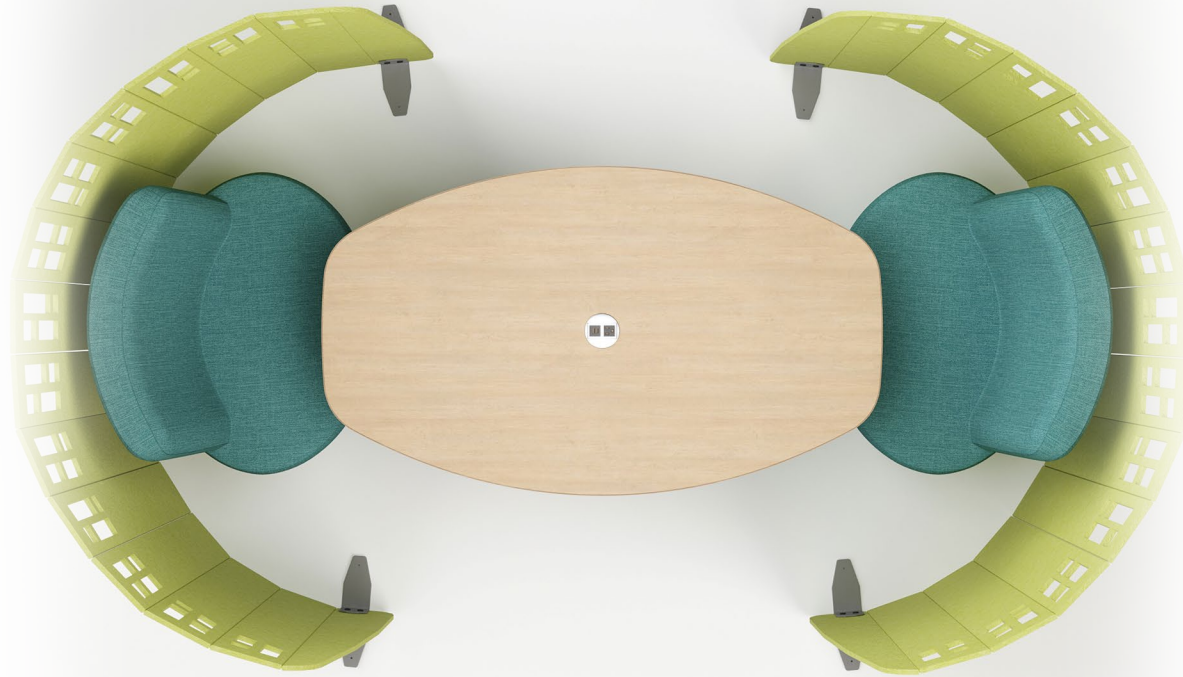


# Applications





# Applications





# Applications

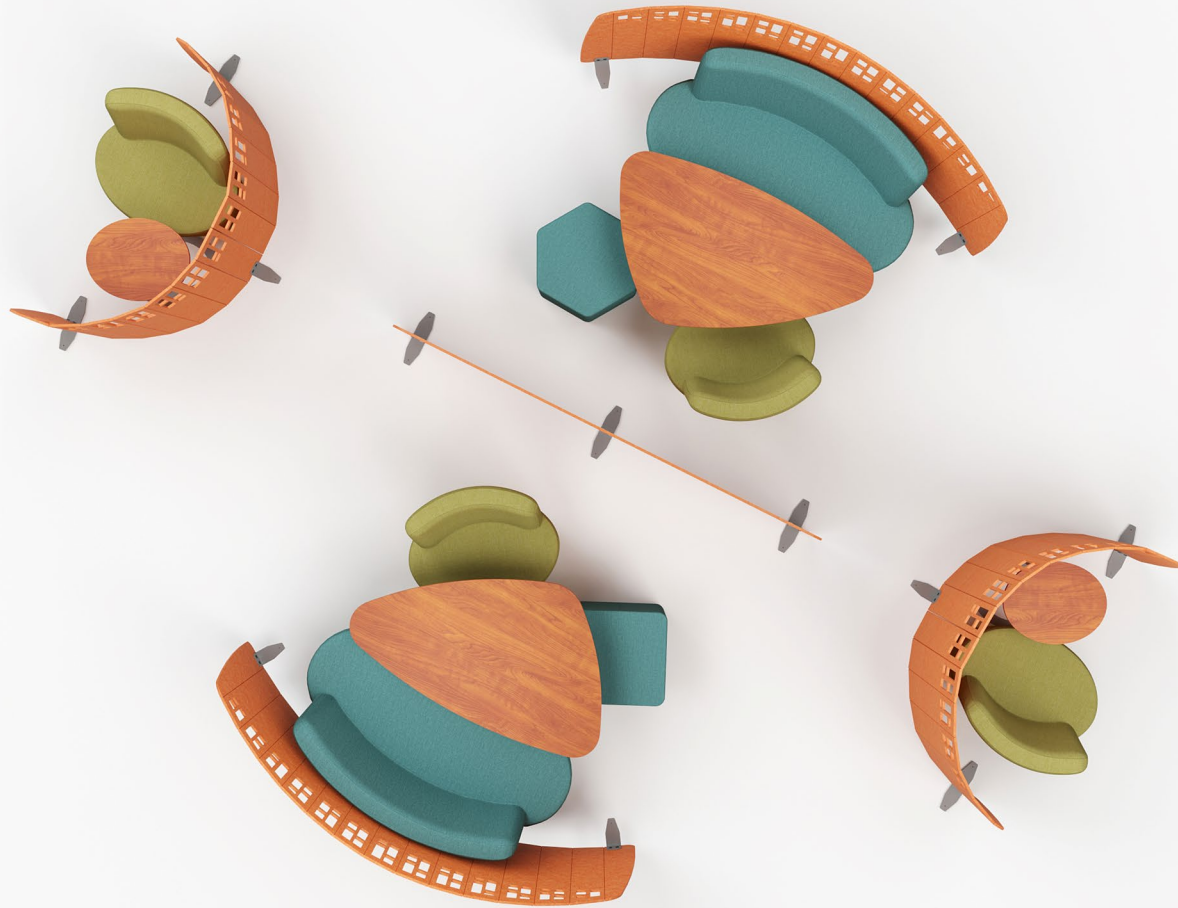




# Applications



# Applications





# Applications



# Sustainability Profile

Smith System shows our commitment to sustainability:

- Designtex vinyl meets several industry standards and certifications:
  - HPD , Mindful Materials , Prop 65 Compliant , WELL , Greenguard Gold.
- All metal & plastic components are 100% recyclable.
- The Flowform Learn Lounge Screen's use PET felt made from recycled plastics.





# Statement of Line- Soft Seating



# Statement of Line- Soft Seating



Fog 3877801



Iron 3877802



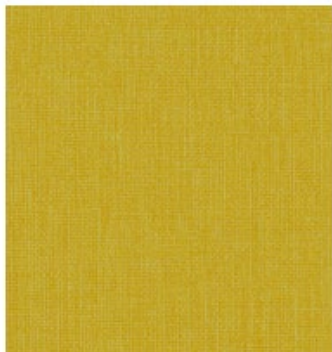
Heat 3877303



Mediterranean 3877401



Cobalt 3877405



Glow 3877204



Apple 3877502



Habanero 3877703

Standard 5 color offerings will remain for shipment through February 28, 2023

Starting March 1, 2023, Standard color offerings will expand to those shown at left

All Designtex Alphabet colors (currently 30) will be available to ship as of 3/1

Non-standard Alphabet colors will have:

- MOQ of 5 soft seating pieces in that same fabric
- Extended lead time will apply 4-15 weeks depending on finish availability.

[Designtex Alphabet Spec PDF](#)

\*Terms above apply to all Soft Seating (Flowform & Flowform Learn Lounge excluding the Flowform Straight & Curved Bench Divider)



# Statement of Line- Tables



# Statement of Line- Tables

Fixed Height:

30"

Desk shapes:

- CURVED RECTANGLE
- OFFSET RECTANGLE
- OFFSET TRIANGLE
- OTTOMAN + SURFACE

## Laminate and Matching 3 mm Edgeband Options



\*\*Upcharge applies

## Edge Color Options



## FRAME COLOR



PLATINUM

\*6 to 8 weeks lead time



# Statement of Line- Screens



# Statement of Line- Screens

## SUGGESTED COLOR OPTIONS



BLUE OPAL



COAL



COBALT BLUE



DARK TEAL



DOLPHIN



LATTE



MOSS GREEN



PEAR



RED



SHADOW BLUE



SHARK



SUNFLOWER



TANGERINE

## FRAME COLOR



PLATINUM



# Pricing

Model #	Model Description	List Price
	<b>FLOWFORM - LEARNING LOUNGE</b>	
	<b>Soft Seating</b>	
55010	SINGLE SEAT	\$ 1,305.00
55011	DOUBLE SEAT	\$ 2,510.00
	<b>Tables</b>	
56013	CURVED RECTANGLE	\$ 1,015.00
56014	CURVED RECTANGLE W/POWER	\$ 1,250.00
56015	OFFSET RECTANGLE	\$ 1,015.00
56016	OFFSET RECTANGLE W/POWER	\$ 1,250.00
56017	OFFSET TRIANGLE	\$ 1,015.00
56018	OFFSET TRIANGLE W/POWER	\$ 1,250.00
56019 _ _ _	OTTOMAN + SURFACE	\$ 940.00
56020 _ _ _	OTTOMAN + SURFACE W/POWER	\$ 1,290.00
	<b>Accessories</b>	
60174	FLOWFORM CHAIR MOBILE KIT	\$ 125.00
55012	FLOWFORM LEARN LOUNGE SCREEN (Solid)	\$ 2,080.00
55013	FLOWFORM LEARN LOUNGE SCREEN - BUBBLES	\$ 2,150.00
55014	FLOWFORM LEARN LOUNGE SCREEN - LEAVES	\$ 2,150.00
55015	FLOWFORM LEARN LOUNGE SCREEN - RECTANGLES	\$ 2,150.00
55017	FLOWFORM LEARN LOUNGE SCREEN - WAVES	\$ 2,150.00

# Resources Available

- Training Slide Deck
- FAQs
- Spec Sheets
- Renderings
- Design Symbols on Website



# Key Dates

- Product Page and Resources go live on our website: 10/17
- Marketing Activity begins week of 10/17
- Sample Package provided week of 10/17
  - Deeper sample package discount if placing order before 11/30
    - 75% off package
- First Market Introduction, FOE, & First Ship 11/1

Thank you.

**Smith System®**

*Built for Learning.*