



OVERVIEW

The sophisticated Planner Studio tables are designed to meet the needs of your Makerspace. The Planner Studio 2nd Surface shelves are shipped ready to attach to your Planner Studio table.

MATERIALS

The 3/4" thick work surface consists of a 45 lb density particle board core with a .030" high pressure laminated surface and a .020" melamine backer sheet. The edge of the work surface features a 3mm flat self edge. Both the work surface and edge are finished in North Sea Gray.

Mounting Rails are constructed of 14-gauge steel, finished with a Platinum powdercoat paint finish. The 2nd surface shelf mounts easily to the matching Planner Studio table frame with a set of mounting rails. The rails mount securely to each predetermined location on the Planner Studio leg set.

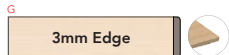
The gap between the 2nd surface and the work surface measures 5". See chart below for fitment with chairs/stools. (29" height not recommended with 2nd Surface Shelf)

FITMENT GUIDE

- *Seating clearance limited with 2nd Shelf installed.
- *Use 24"h stools for 36"h tables.
- *Use 28"h stools for 40"h tables.

TOP AND EDGE OPTIONS

3/4" TOP W/ 3MM - 90° CORNERS



LAMINATE/EDGE COLOR OPTION



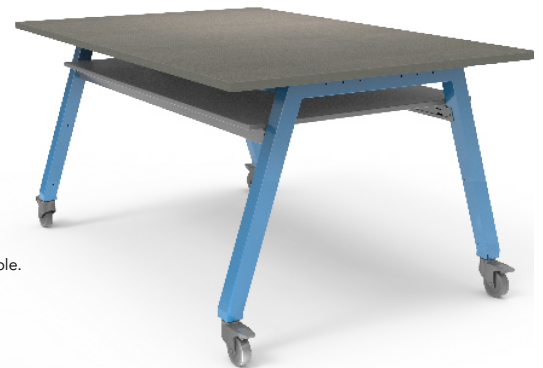
NORTH SEA GRAY

DIMENSIONS

Model	Description	D"	W"	H"	WT
77250	Second Surface Kit for 36"d/42"d x 48"w Studio Tables	24	41.5	0.75	41
77251	Second Surface Kit for 36"d/42"d x 60"w Studio Tables	24	48	0.75	45
77252	Second Surface Kit for 36"d/42"d x 72"w Studio Tables	24	60	0.75	57
77253	Second Surface Kit for 48"d x 48"w Studio Tables	36	41.5	0.75	51
77254	Second Surface Kit for 48"d x 60"w Studio Tables	36	48	0.75	57
77255	Second Surface Kit for 48"d x 72"w Studio Tables	36	60	0.75	71



#77254, shown on #25246F (48" d x 60" w x 40" h) Planner Studio table paired with #11890 Flavors Stools (28" h).



#77255, shown on #25250F (48" d x 72" w x 36" h) Planner Studio table.