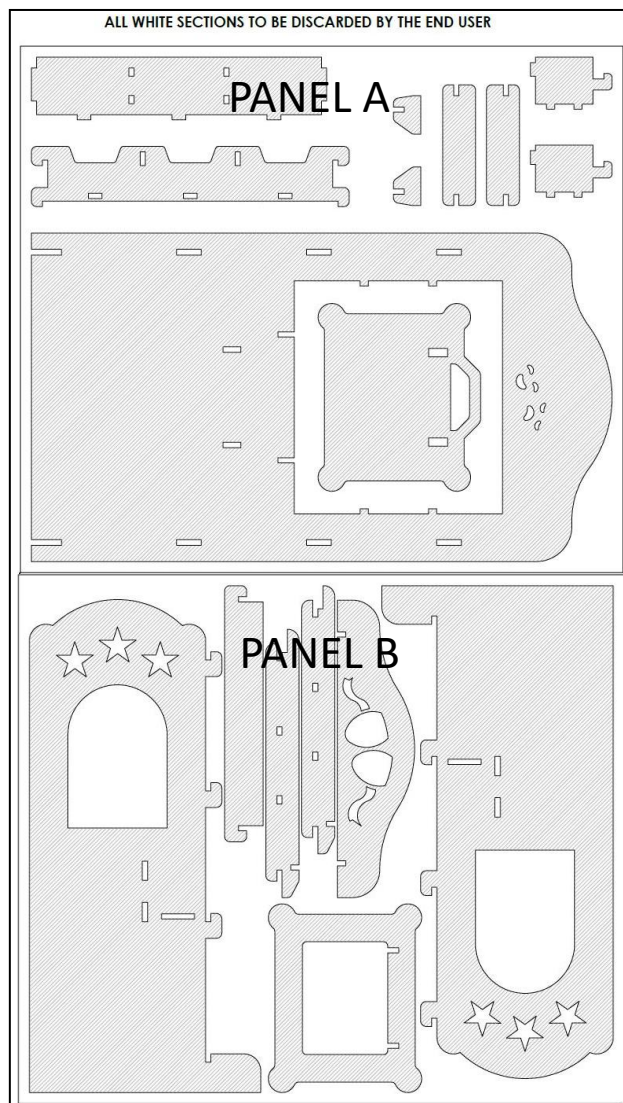
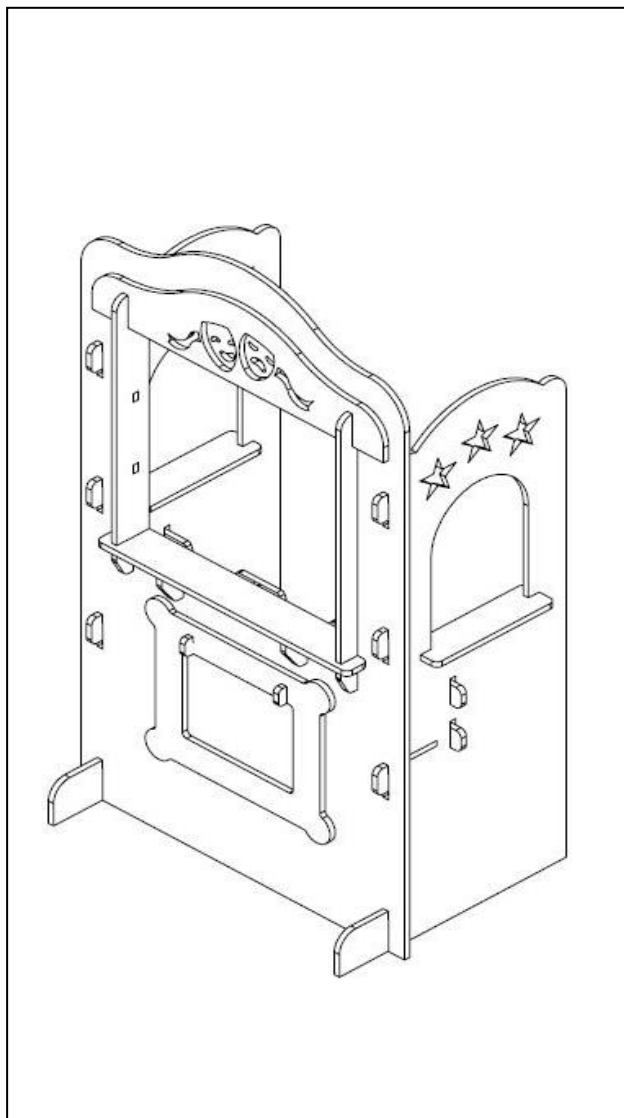


# Assembly Instructions

## FLOWFORM PLAY – PUPPET THEATER

### Components



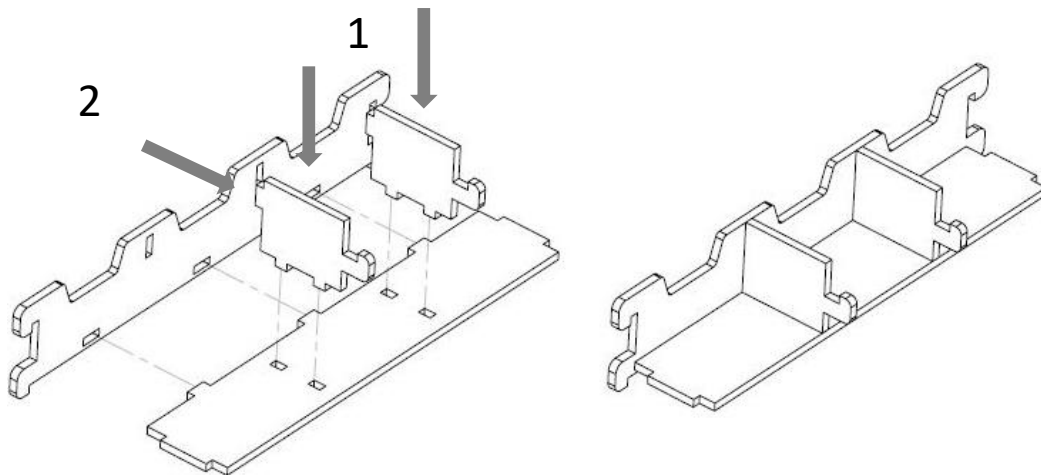
- Check that all components are accounted for and undamaged before assembling.
- Please assemble the product in a clean and dry area.
- Clean the product with a mild cleaner and a damp cloth.

If you have damaged or missing components,  
please contact customer service at 1-800-328-1061

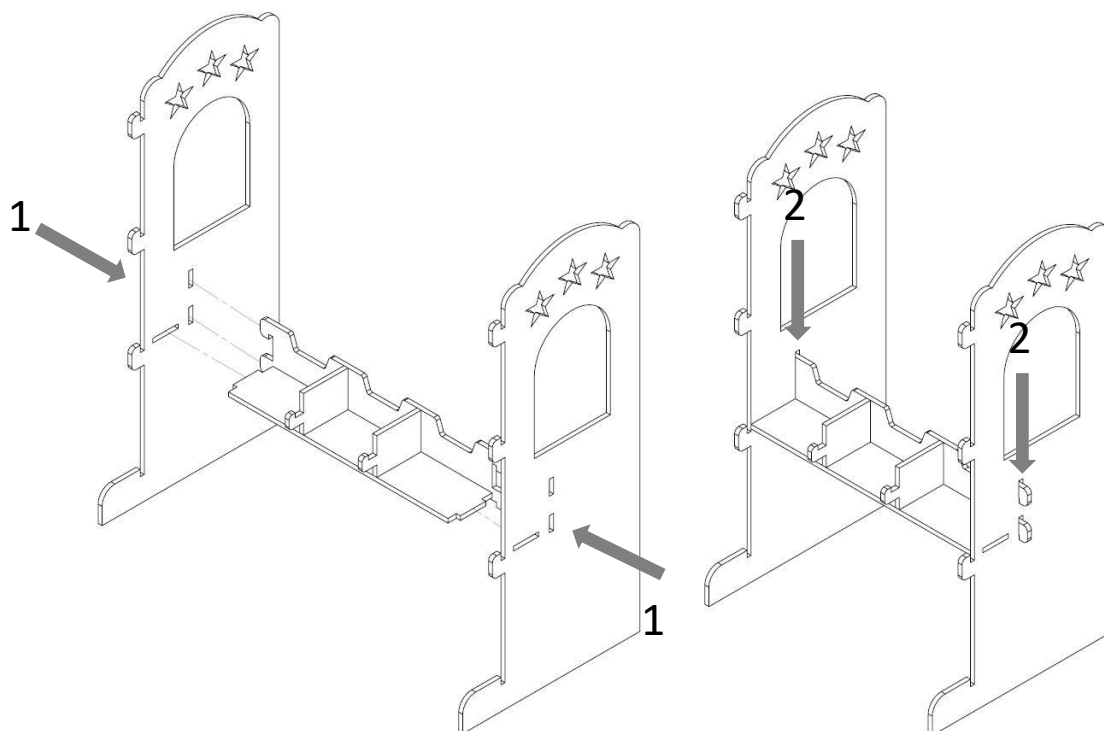
# Assembly Instructions

2

1. Remove all PET felt sections shown in white on the supplied model specific maps. Take care when removing the components, the felt components can bend and crease if handled roughly.
2. Align the mating geometry as shown, the parts should mate without gaps.

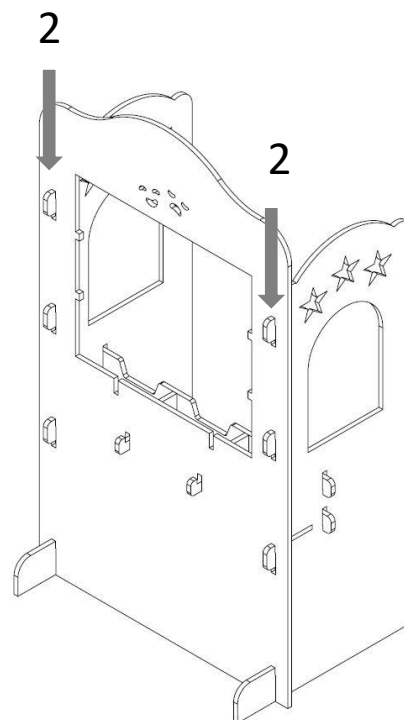
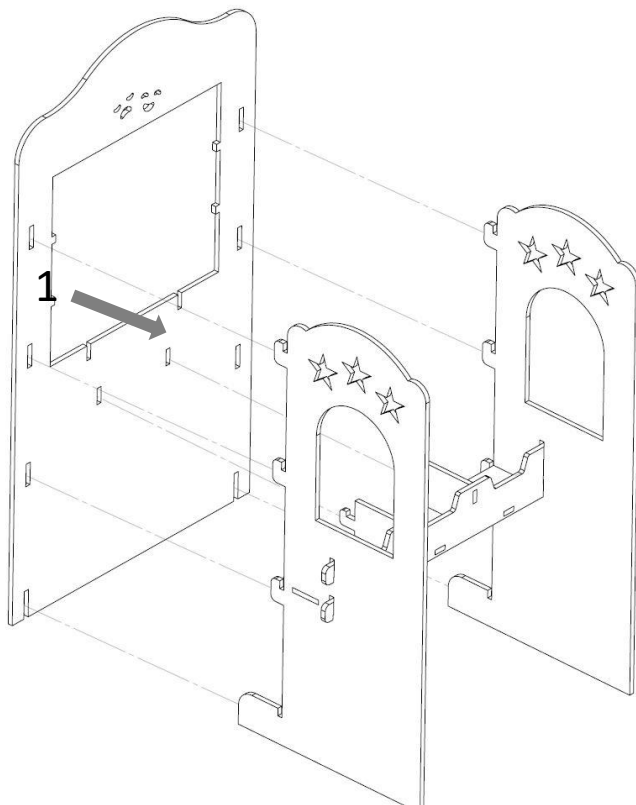


3. Carefully align the side panels with all mating nubs. The side panel should slide over the hooks first then the nubs. An extra set of hands helps, do not force the parts. A gentle tap with the palm of your hand is sufficient to seat the parts.
4. Once all nubs are seated lock side panel hooks into place by sliding the shelf hooks down.



# Assembly Instructions

5. Carefully align the front panel with the previously assembled panels, slide the panel over the hooks then slide the front face down to lock the hooks into place.



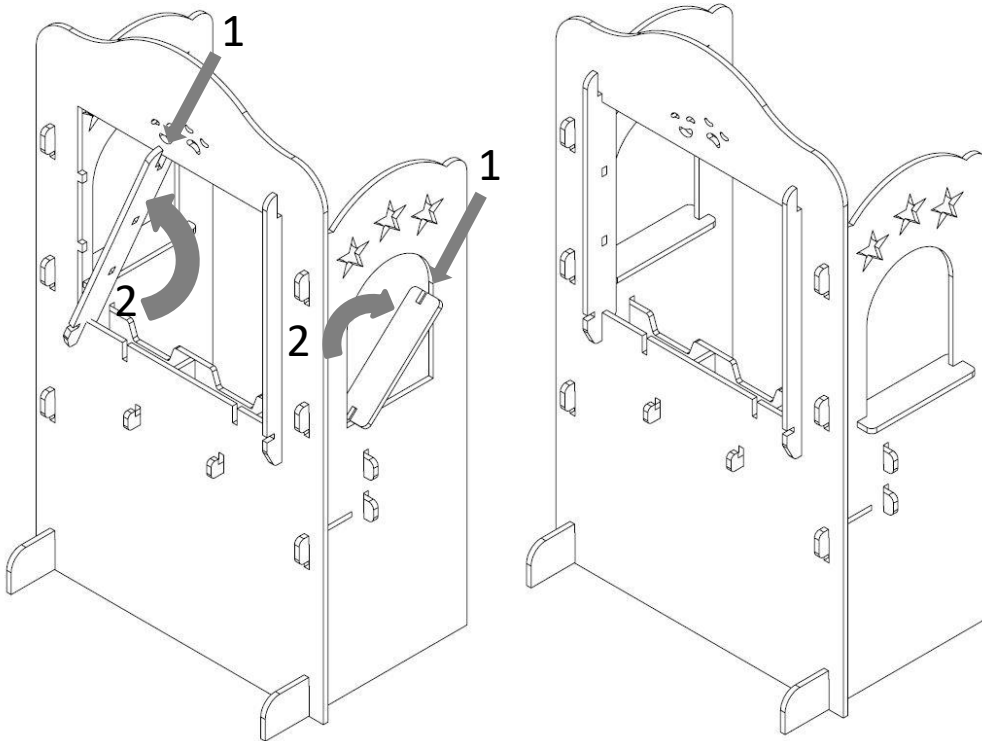
6. Carefully align the side panels with all mating nubs. The side panel should slide over the hooks first then the nubs. An extra set of hands helps, do not force the parts. A gentle tap with the palm of your hand is sufficient to seat the parts.

7. Once all nubs are seated lock front panel hooks into place by sliding the side panel up and then press the shelf hooks down.

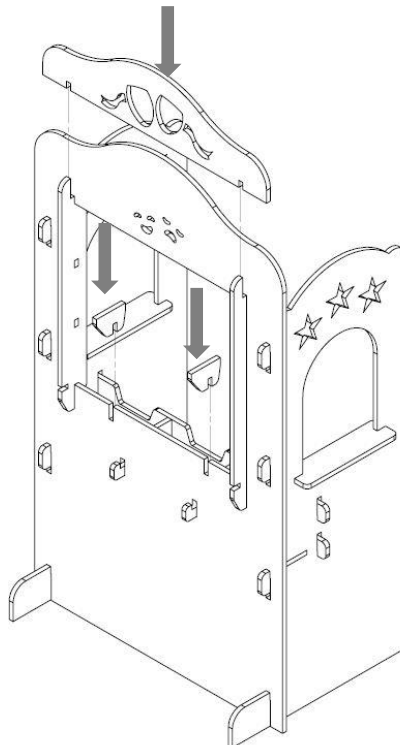
# Assembly Instructions

4

8. Install the 4x window braces as show, first insert the nubs of the window brace into the mating geometry and then rotate into place.



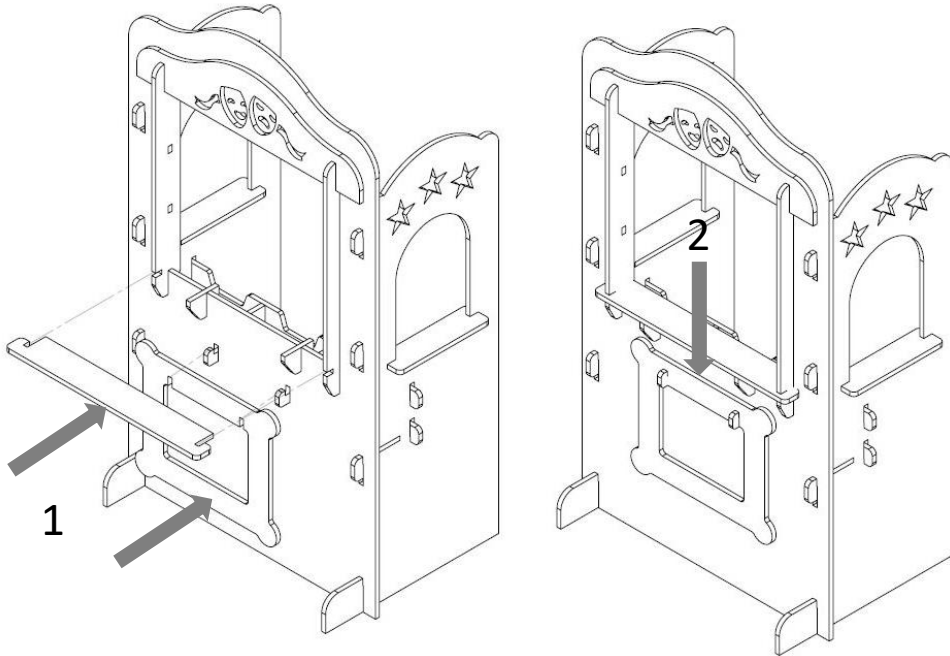
9. Align the mating geometry as shown, the parts should mate without gaps.



# Assembly Instructions

5

10. Align the mating geometry as shown, slide the display frame over the hooks then slide down to lock the display frame into place.



**Assembly Complete.**



